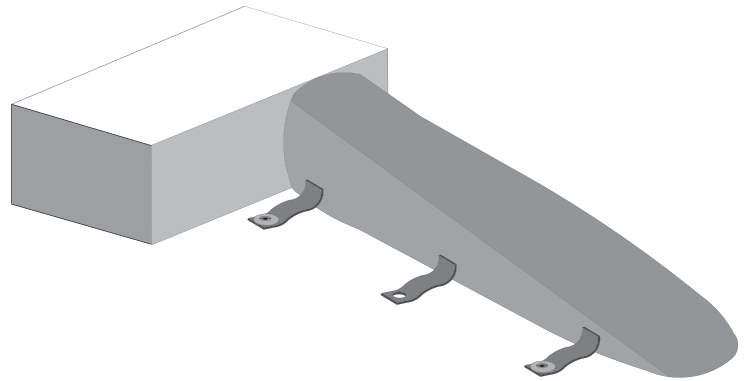




Safety Cover Installation



Up and Overs and Gap Filler Pillows



Up and Overs

Sometimes, a pool will have an elevated area that will need to have the cover rise up over it. This could be because the elevated area is a part of the pool, for example, a raised spa area, or it could be because the raised area would not support the installation of a cover using the cable system. In either case, special considerations need to be met when installing the cover.

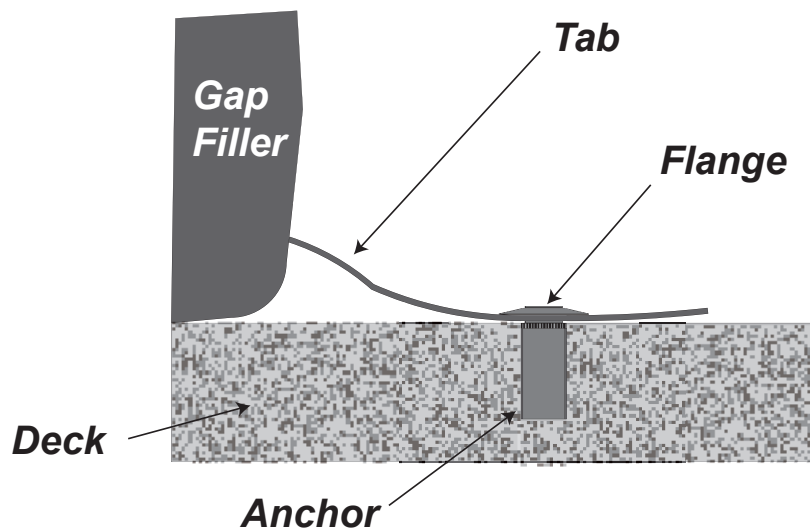
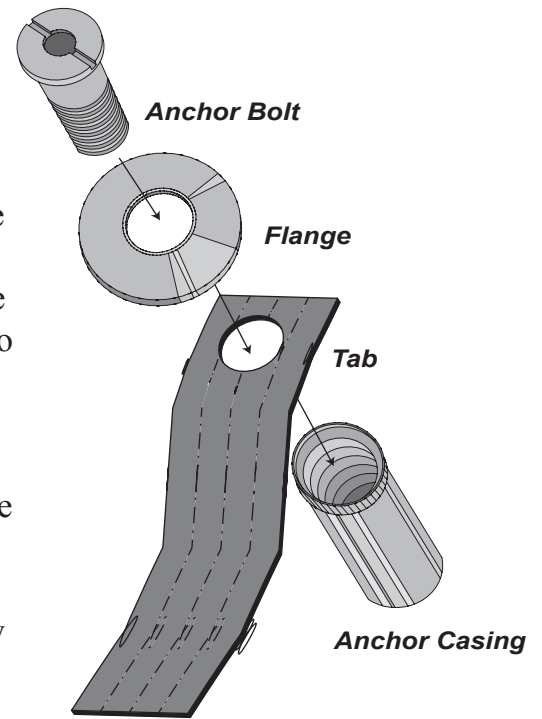
If the raised area involves a gradual rise from normal deck level to the elevated area, the cover can be installed normally. No special considerations are necessary.

However, the more normal configuration is where there are abrupt changes in the height of the area being covered, like with steps as part of the deck or raised walls. When the cover is installed in these situations, a gap will form between the cover and the lower level of the deck. In order to conform to the ASTM standards for safety covers, and also to prevent debris from blowing under the cover and into the pool, this gap must be closed. Garrett Covers provide two different methods for blocking this gap, depending on the situation: gap filler pillows or a tailored cover.

Gap Filler Pillows

If the rise of the elevated area is small, usually less than one foot, the cover will be supplied with a Gap Filler Pillow. This is a triangular shaped wedge made from the same material as the cover, which is to be put under the cover at the point of the rise to fill the tapering gap formed. Each pillow is manufactured with 2 or more tabs of webbing material sewn into both sides. Each tab has a hole at the end which is used to anchor the pillow to the deck. Only two of the tabs are necessary to firmly anchor the pillow in place, and it is left up to the installer which two tabs are most convenient.

Garrett Covers does recommend that a tab from each side of the pillow be used for the most secure installation. When installing the pillow, put it into position so that it is under the edge of the cover and pressed tight against the raised area. Mark the location of the two tabs that will be used to anchor the pillow. Remove the pillow and install a brass anchor at both locations. Remove the pop-up from the anchors, and place the pillow back in position. Take the pop-up from one anchor and pass it through the supplied brass flange, and then through the hole in the tab of the pillow. Securely screw the pop-up into the anchor. Repeat the procedure with the other pop-up.



Tailored

For the situation where the rise is higher than one foot, a gap filler pillow does not provide the security needed. In this case, the cover itself will be tailored to fill the gap. At the point of the rise, a triangular piece of cover material will be sewn into the cover. This flap is to be pulled down vertically from where the cover meets the rise. At the bottom of the flap, two or more holes will be provided to anchor it in place. Use the same method for anchoring a gap filler pillow to anchor the cover flap in place. Extra anchors and flanges will be provided in the box for this purpose.