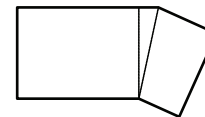
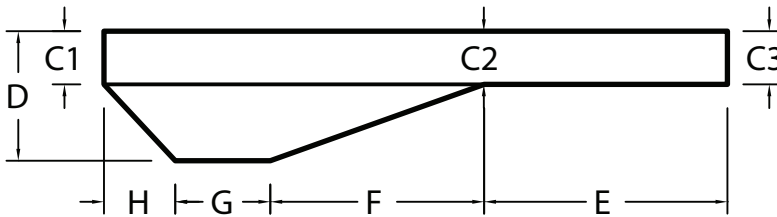
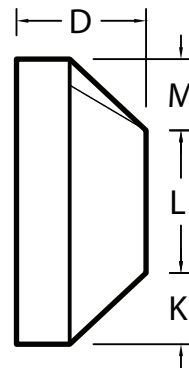
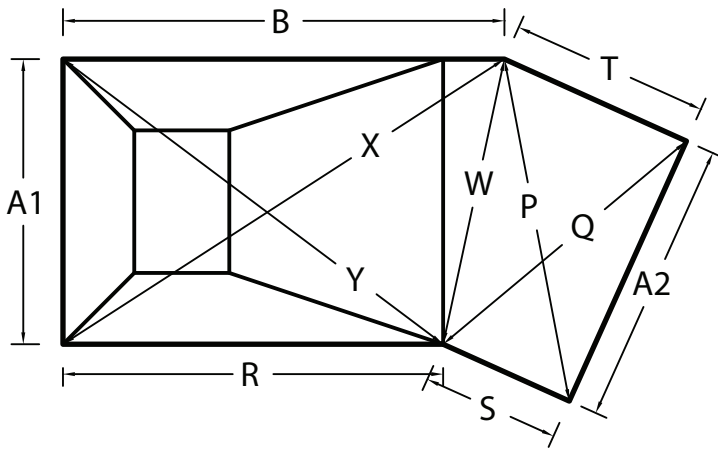


Garrett Liners: Dimensions for Lazy-L Right Hopper



Break Line is:

- Bend to Bend
 Parallel

Dimensions

A1	
A2	
B	
C1	
C2	
C3	
D	
E	
F	
G	
H	
K	
L	
M	
N	
P	
Q	
R	
S	
T	
W	
X	

Y	

Diagonals are measured to: 90 Corner / Center of Radius

CORNERS: Square Radius Diagonal Size:

SAFETY LEDGE: Y N Size:

STEPS: Y N **PLASTIC STAIRS:** Y N (note location)

Work space for any additional information or drawings

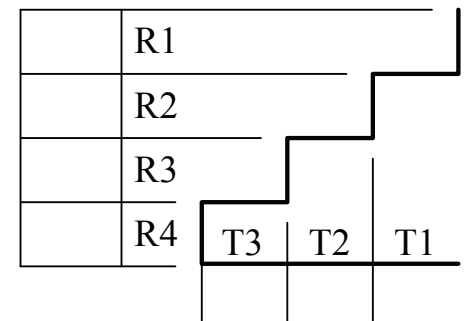
Stairs

Do the steps require:

- Pockets Flaps Bead

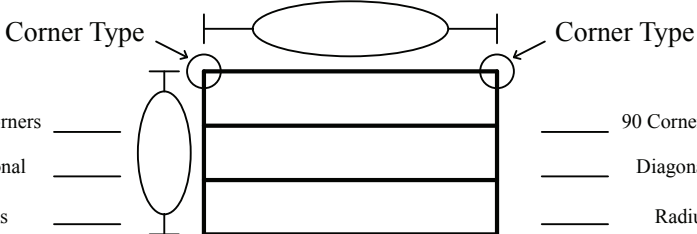
Stair Location

- Center Shallow End
 Right Shallow End
 Left Shallow End
 Other



Please draw the step location. (draw for fiberglass steps as well)

Flush Stairs



Recessed Stairs

