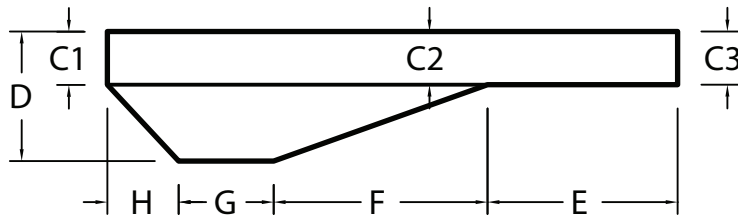
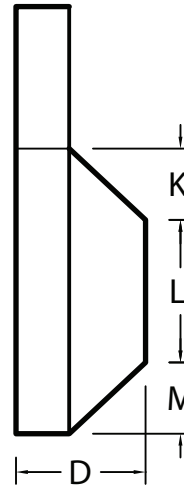
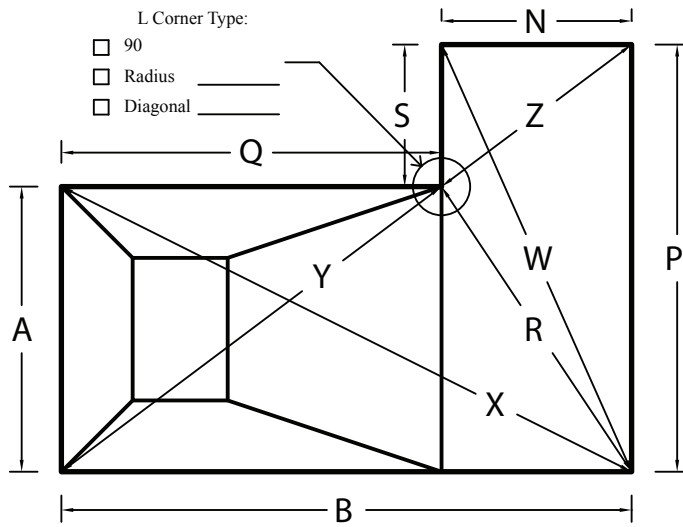


Garrett Liners: Dimensions for True-L Left Hopper

L Corner Type:

- 90
 Radius
 Diagonal



Dimensions

A	
B	
C1	
C2	
C3	
D	
E	
F	
G	
H	
K	
L	
M	
N	
P	
Q	
R	
S	
W	
X	
Y	
Z	

Diagonals are measured to: 90 Corner / Center of Radius

CORNERS: Square Radius Diagonal Size:

SAFETY LEDGE: Y N Size:

STEPS: Y N **PLASTIC STAIRS:** Y N (note location)

Work space for any additional information or drawings

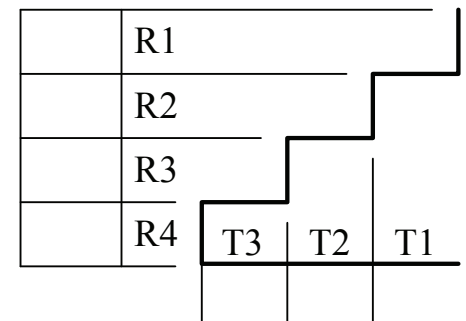
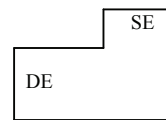
Stairs

Do the steps require:

 Pockets Flaps Bead

Stair Location

- Center Shallow End
 Right Shallow End
 Left Shallow End
 Other

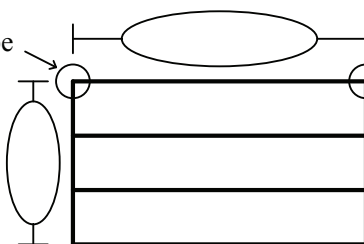


Please draw the step location. (draw for fiberglass steps as well)

Flush Stairs

Corner Type

- 90 Corners _____
 Diagonal _____
 Radius _____



Recessed Stairs

Corner Type

- 90 Corners _____
 Diagonal _____
 Radius _____
 A _____
 B _____

